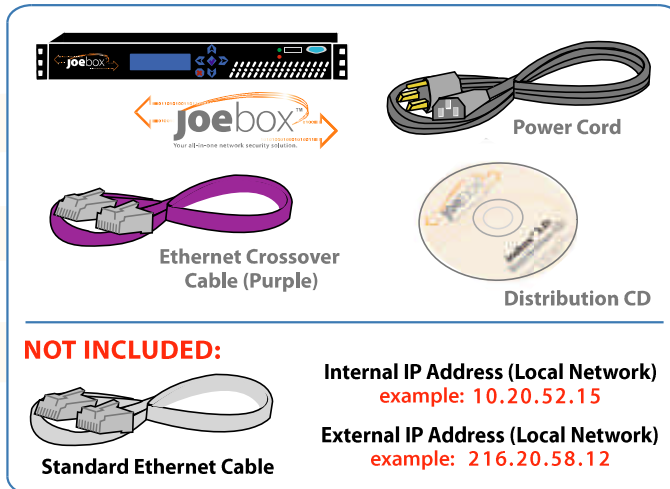


Setting up your



Items Checklist

- One Joebox™
- One Power Cord
- One Ethernet Crossover Cable (Purple)
- One Distribution CD
(not needed for setup procedure)

NOT INCLUDED:

- At Least One Standard Ethernet Cable
- Internal & External IP Addresses
(Local Network)

1 Connecting the Cables

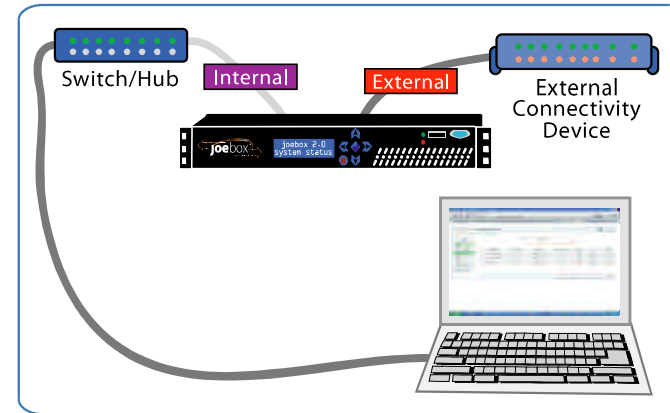
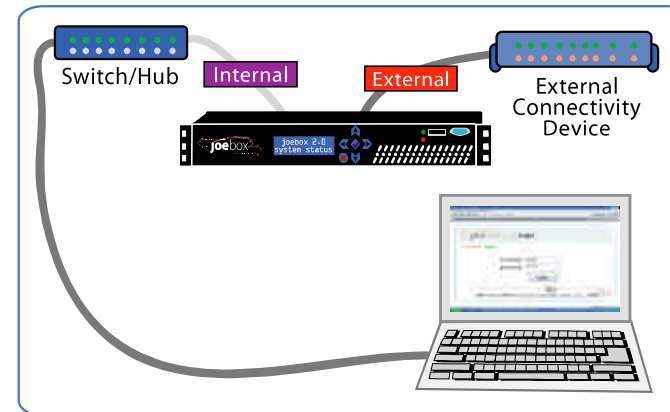
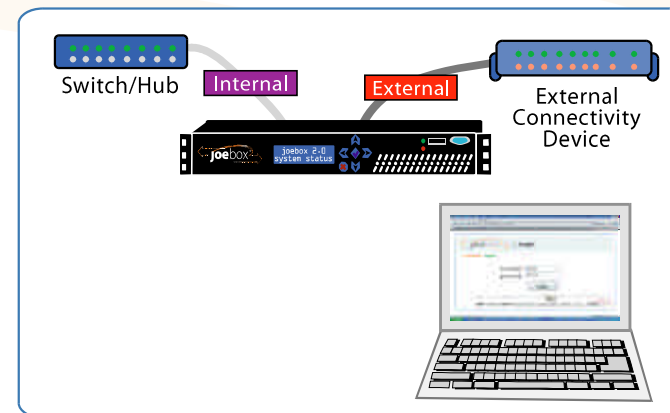
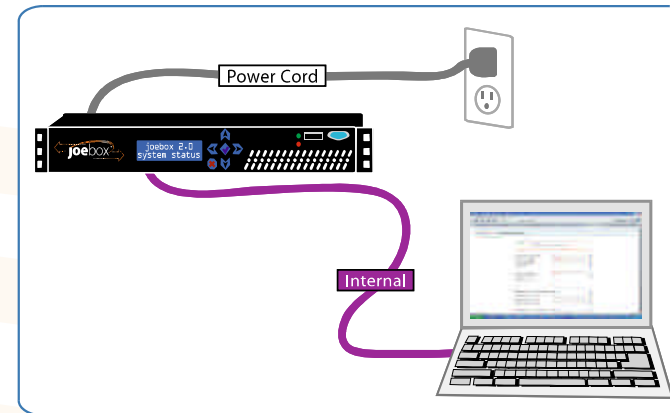
- Plug **one end** of the Ethernet Crossover Cable into your computer's Ethernet port and the **other end** into the Joebox Ethernet port labeled "Internal".

2 Powering on the Joebox™

- Plug **one end** of the Power Cord into the Joebox and the **other end** into the a power outlet. The Joebox will power on when you plug it in.

3 Accessing your Joebox™ for the 1st Time

- **NOTE:** If your computer does not get an IP address via DHCP, then you must set your computer's IP Address to **192.168.1.8** with a netmask of **255.255.255.0**.
- On your computer, open a web browser and go to **https://192.168.1.1:10000/**
- At the login prompt, type "**admin**" for a username and "**icecream**" for a password.



4 Registering your Joebox™

- After logging into the Joebox, you will need to fill out the registration fields to start working with your Joebox.
NOTE: Make note of the internal address range you set, then click "**write changes**".
- The Joebox will now reboot using the settings you specified in the registration fields.

5 Connecting your Joebox™ to the Outside

- Connect a standard Ethernet cable between your external connectivity device (DSL or cable modem, router, etc), and your Joebox Ethernet port labeled "**External**".
- Disconnect the Ethernet crossover cable between your computer and the Joebox's "**Internal**" Ethernet port.
- Plug a standard Ethernet cable between your network LAN switch (or hub) and the Joebox "**Internal**" Ethernet port.

6 Testing the Connectivity

- Reset the IP address on your computer to one in the range you specified on the registration screen's "**Internal Interface**" field.
- Connect your computer to your **LAN** switch (or hub).

7 Configuring your Joebox™ Settings

- After 90 seconds, your web browser will auto-refresh to the Joebox login page. Log in again with the username "**admin**" and the password "**icecream**".
(NOTE: You can change the password later).
- Now you are ready to configure your Joebox further. Be sure to check the status of the "**Internal**" and "**External**" interfaces to make sure they are "**Up**" by going to "**Network**", and then select "**Interfaces**".
- **NOTE:** By Default, the "**Optional**" interface will be "**Down**". Also some "**outgoing access**" from client machines behind the Joebox are blocked. **ALL "incoming access" is blocked.**